

# The ACC Connection

Volume 2, no.3, July 2006

**WELCOME** to the fourth edition of the **ACC Connection**, a quarterly newsletter designed to help researchers with questions regarding animal research at the University of Connecticut Health Center. Our fourth issue is designed to help you become familiar with the USDA and PHS requirements of facility and laboratory inspections. The Health Center is required to ensure that animal use conforms to a multitude of state and federal regulations which include compliance with the Animal Welfare Act in accordance with the Animal Welfare Regulations (9 CFR, 1985), the Public Health Service Policy on Humane Care and Use of Laboratory Animals (2002), U.S. Government Principles, and the recommendations promulgated by the *Guide for the Care and Use of Laboratory Animals*.

## Laboratory Inspections- An Overview

Both the USDA and PHS require that facility inspections are performed a **minimum of once every 6 months**. But what exactly is required to be inspected? Simply stated, the core animal facility- along with any animal study areas and support space- must be inspected. Animal study area is defined differently by the USDA and PHS Policy. Since the definition of animal study area is "more strict" by USDA definition, it is the one we use: "any building room, area, enclosure or other containment outside of a core facility or centrally designated or managed area in which animals are housed for more than 12 hours" (Animal Welfare Regulations, Part One). Laboratories where survival or non-survival surgical procedures are performed must also be inspected. Here at the Health Center, we currently have approximately 90 laboratories where surgical procedures are performed that are inspected.

What about the other laboratories- ones in which live animals are used but no surgical procedures are performed? Though there are no regulations to inspect these rooms every 6 months, the IACUC is still charged with ensuring that these rooms conform to the standards set forth in the Animal Welfare Act, 9 CFR Chapter I and/or those standards set by the Office of Laboratory Animal Welfare (OLAW). At the Health Center, we currently have approximately 60 laboratories that fall into this category. In order to ensure compliance with these laboratories, the IACUC rotates these inspections on a 5 year basis; the laboratories will be inspected a minimum of once every 5 years.

## Laboratory Inspections- The Animal Facility (and satellite holding)

Our animal facility is inspected once every 6 months- in **June** and **December** in order to comply with the laws regarding the use of laboratory animals. The following will detail how these inspections are accomplished:

### Animal holding rooms

Every animal holding room is inspected. Currently, this involves approximately 60 individual animal rooms. Inspection items reviewed include: ensuring that the animal areas are separate from personnel areas, there is a separation of species and separation by disease status; corridors, doors, windows, floors, drainage, walls, ceilings, HVAC, power & lighting, and noise are evaluated to make sure all are in good working order; temperature, humidity, ventilation of caging are looked at to make sure they conform to acceptable standards; sanitation, cleaning tools, food/water access, security, safety, ease of undisturbed observation, and size meet the physiological, behavioral, and social needs to the animals; environmental enrichment is evaluated along with any applicable requirements for social grouping and other animal activities as required by law. The IACUC looks at the feeding schedule & procedures, evidence of contamination, storage in sealed containers, expiration date labeling, vermin control, and rotation of stock; and vendor quality control; bedding is looked at to make sure it is species appropriate. Sanitation schedules are reviewed noting frequency of bedding changes, cleaning & disinfection of the rooms; waste disposal issues are evaluated to include procedures for collection, storage and disposal guidelines, hazardous waste, and animal carcasses. The IACUC makes sure that pest control is regularly scheduled and that there is a documented program for control of rodent pests and insecticide use. The IACUC makes

sure all daily animal observations are performed and documented, that there is a provision for emergency, weekend, and holiday care. Animal identifications are checked: cage cards and/or rack cards, for instance, look to make sure that clinical records are accessible and appropriate.

### Personnel and support areas

Locker rooms, administrative areas, and storage areas are inspected to make sure they are adequate for the work being done.

### Cagewash areas

All cagewash areas are inspected. The IACUC inspects doors, windows, floors, drainage, walls, and ceilings to make sure all are in good repair. The IACUC evaluates if there is sufficient space for the workload; inspects guidelines for safety precautions used in the cagewash areas; inspects traffic flow (clean to dirty) to ensure there is no contamination of clean equipment by dirty equipment. It evaluates whether the utilities are appropriate and if the ventilation meets the heat and humidity load and regulatory requirements. The IACUC determines if appropriate safety features (SOPs, warning signs, eyewash stations) are in use; ensures that cagewash temperatures are monitored and records are available.

### Aseptic surgical area

Surgical rooms are inspected to make sure that the location minimizes traffic and contamination; that the functional components (surgical support, animal preparation, post-op areas) are designed according to regulations. The IACUC evaluates whether there is appropriate storage, control, and expiration date monitoring for drugs; make sure there is a safe sharps disposal system; contamination control and cleaning procedures are evaluated to ensure they are effective. The scavenging system for anesthetic gasses are inspected; warning signs (where appropriate) are also looked at.

## Laboratory Inspections- Animal Study Areas a/k/a Investigator Labs

### Laboratories which perform surgical procedures

When the IACUC inspection team evaluates the PI laboratory, they are looking for some specific things. They look to make sure all drugs used on the animals are within the expiration date; they look at the surgical area to see if it is clean and uncluttered and not used for anything else during surgery. They will ensure that carcasses are stored properly in the laboratory (if applicable). They will look at sharps containers to make sure needles are not recapped and that containers aren't over-filled. They will check on the anesthetics used in the laboratory and make sure it conforms to the animal care and use protocol. They will ask questions on how your instruments are sterilized and, if autoclaving is performed, inspect autoclave packs to make sure they are dated. The IACUC team will look at gas cylinders in the laboratory and make sure that they are chained to the wall. If the laboratory employs a precision vaporizer, it will be inspected to make sure the calibration is in date. Logsheets for dispensing controlled substances will be reviewed to ensure that they comply with federal legislation and they will make sure controlled substances are stored properly. They will ask to see the animal care and use protocols and safety protocols (where applicable) to make sure that they are the current versions and located in an area of the laboratory where all personnel have access to them.

### Laboratories which do not perform surgical procedures

These areas will be inspected to look at euthanasia of the animals and ensure it complies with the protocol. The IACUC will check on the anesthetics used in the laboratory and make sure it conforms to the animal care and use protocol. The IACUC will look at the general cleanliness of the laboratory. They will check sharps containers to make sure needles are not recapped and that the containers aren't over-filled. The IACUC team will look at gas cylinders in the laboratory and make sure that they are chained to the wall.

## Frequently Asked Questions

*Whenever the IACUC team comes to do an inspection, it seems like we just had to go through one. Why is this?*

Both the Animal Welfare Act and PHS Policy require inspections a **minimum of once every 6 months**. If you are using regulated species, performing any type of surgical procedure (survival or non-survival), or house animals in your laboratory for more than 12 hours, you are subject to these inspections. The Health Center **must comply** with federal laws and regulations governing the use of laboratory animals.

*Are these inspections announced?*

Generally, yes, the laboratory inspections are scheduled with the Principal Investigator of the laboratory. The IACUC needs to ensure that someone will be available to show them around the lab. This individual does not have to be the PI—s/he can be anyone who is familiar with the animal procedures being performed in the laboratory. If there are problems encountered during the inspection, the PI will be notified as to what needs to be done to correct the deficiency and a date

it needs to be corrected by. In this case, the IACUC might perform an unannounced inspection to ensure that the corrections have been accomplished.

#### *How can I prepare for my laboratory inspection?*

Being familiar with the areas that are looked at in a laboratory inspection can help you to prepare for an inspection visit. Items that are inspected have been detailed above; the PI should ensure that they conform to the standards— whether federal or institutional.

#### *When are the inspections performed?*

All of the PI laboratories are inspected during **June** and **December**. Approximately one month prior to the inspection cycles, the PI will be notified that an inspection date and time have been assigned. It is important that the PI comply with this inspection date and time. The IACUC has to inspect approximately 90 laboratories during a one month time frame and it is difficult to accomplish this without substantial cooperation from the PIs.

If you have questions you'd like to see answered in future issues, please send them to [pohl@uchc.edu](mailto:pohl@uchc.edu) and we will do our best to answer as many questions as possible.

## Upcoming Training, July 2006 – September 2006

### Animal Users Basic Core Training

Monday, July 17, 2006	9:00 am – 12:00 pm	Building 20 conference room
Monday, August 21, 2006	9:00 am – 12:00 pm	Building 20 conference room
Monday, September 18, 2006	9:00 am – 12:00 pm	Building 20 conference room

### Animal Users CLAC Training- Limited to 20 people (sign-up sheet for additional sessions will be available)

Wednesday, July 19, 2006	11:00 am – 12:30 pm	Building 20 conference room
Topic: Rodent Quality Assurance Program		
Wednesday, August 16, 2006	11:00 am – 12:30 pm	Building 20 conference room
Topic: Proper Use of Flagging Cards and Stickers		
Wednesday, September 20, 2006	11:00 am – 12:30 pm	Building 20 conference room
Topic: Get an Animal Care Protocol Approved with Minimal Delay and Frustration!		

## New Institutional, State, or Federal Regulations

### Institutional

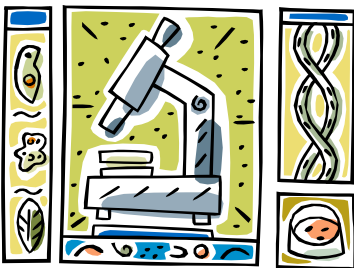
ACC Policy	4/13/06	New Protocol Submissions. To view the policy, go to: <a href="http://clacc.uchc.edu/ACC/Policies/NewProtocolSub.htm">http://clacc.uchc.edu/ACC/Policies/NewProtocolSub.htm</a>
ACC Policy	4/13/06	Collecting Samples for Genomic Analysis. To view the policy, go to: <a href="http://clacc.uchc.edu/ACC/Policies/GeneticSampling.htm">http://clacc.uchc.edu/ACC/Policies/GeneticSampling.htm</a>
ACC Policy	4/13/06	Use of Tribromoethanol. To view policy, go to: <a href="http://clacc.uchc.edu/ACC/Policies/Tribromoethanol.htm">http://clacc.uchc.edu/ACC/Policies/Tribromoethanol.htm</a>
ACC Policy	4/13/06	Use of Complete Freund's Adjuvant. To view policy, go to: <a href="http://clacc.uchc.edu/ACC/Policies/CFAUse.htm">http://clacc.uchc.edu/ACC/Policies/CFAUse.htm</a>
ACC Policy	5/25/06	Reporting Morbidity and Mortality. To view the policy, go to: <a href="http://clacc.uchc.edu/ACC/Policies/MorbidityMortality.htm">http://clacc.uchc.edu/ACC/Policies/MorbidityMortality.htm</a>
ACC Policy	5/25/06	Training Requirements for USDA Species. To view the policy, go to: <a href="http://clacc.uchc.edu/ACC/Policies/TrainUSDA.htm">http://clacc.uchc.edu/ACC/Policies/TrainUSDA.htm</a>

New email address for protocol/modification submissions: [ooacc@uchc.edu](mailto:ooacc@uchc.edu)

Federal

In Congress

*Pet Safety and Protection Act*- would amend the Animal Welfare Act to prevent research facilities from purchasing dogs and cats from Class B dealers. Introduced into the US House of Representatives and a companion bill is pending in the Senate.



## Next Issue: Working with rDNA

### CONTACTS

ACC Coordinator  
ACC Administrative Assistant  
ACC Chair  
CLAC Director  
Associate VP for Health Administration

Alison D. Pohl, MS, MT, rLATg  
Tiffany Jespersen, ALAT  
Joseph Lorenzo, MD  
Peter Autenried, DVM  
Leonard Paplauskas

x4129  
x4397  
x8199  
x2248  
x3173